

Q2. Answer the Following:

(2x4=8)

CO1, BTL1,
CO 2, BTL
2,
CO 3, BTL
CO 4 3,
BTL 4

1. What does assisted hatching do?
2. What is embryo hatching?
3. Why should a hypoosmotic solution assay be done?
4. What could a laparoscopic examination tell?

Q3. Answer the Following:

(3x3=9)

1. What are the 3 stages of fertilization?
2. What infertility problems can be associated with heavy smoking in males?
3. Embryo grading is considered a subjective process. What is meant by that?

Q4. Answer the following:

(4x3=12)

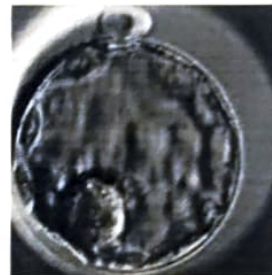
1. Which embryo would you consider to be the highest quality and, therefore, the top-ranked embryo for transfer?



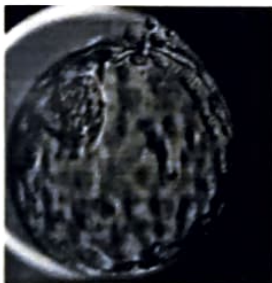
A



B



C



D



E

2. Write a short note on gamete preservation.
3. Write briefly about egg retrieval and the problems associated with it.

Q5. Answer the Following: (Any one)

(5x1=5)

CO1, BTL1,
CO 2, BTL
2,
CO 3, BTL
CO 4 3,
BTL 4

1. Discuss cortical reaction as an important aspect of fertilization, citing the events associated with it
2. Give a brief overview of ART techniques

*****All the Best*****